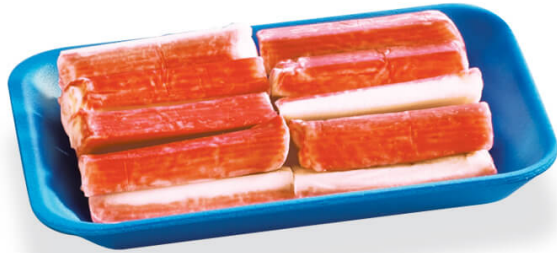


## **618 TRAY**

### **Product data sheet: 110618**



**Material:** FOAM

**Unit per package:** 600

**Measures:** 8.07 x 5.91 x 0.79 inches

**Unit of measure:** Bolson

**Volume package (m3):** 0.149

**Code:** 110618

**Colors:** Black Blue Green Red White Yellow

**Boxes per 40HC CTN:** 463

**Certifications SENASA:** [E-53](#)

**Certifications INAL:** [668-03](#) [669-03](#)  
[670-03](#) [671-03](#) [672-03](#)

**Suitable use:** freezer

**Certifications ISO:** [14001](#) [45001](#) [9001](#)

**Storage:** Ideal storage conditions: dry areas under temperatures not exceeding 40°C.

**NOTE:** the information contained in these Product Data Sheets is intended for illustration purposes on the use and application of the product. The information being provided should not be interpreted as an express or implied warranty from the manufacturer about them. Bandex S.A. shall not be responsible and the company verifies that the product is suitable for the intended purpose. The company reserves the right to modify the characteristics and/or properties of the packaging without prior notice.

This file was generated on 16-05-2024 11:13 AM from [online file](#)